

Inspired by Minimalism

4.0 Electrical Installation

Twine, Lacing, LOH	163
Cable Clips.....	164
Electrical Insulation Tape.....	165-166
Slotted and Solid Trunking	167-168
Cable Glands including Metric.....	169-171
Cable Glands Accessories.....	172
Utility Junction Boxes	173
Wire Connectors.....	174
Din Rail	175
Connector Strips	176
FOSPRO	176
Line Taps.....	177
Wall Boxes	178-179
Earth Rods	180



Twine Lacing

Braided Waxed Nylon Lacing (Black and Natural)

- High temperature up to 150°C
- Oil resistant
- Grips cables as laced and does not loosen if tension is reduced
- Conforms to MIL - T -43435, type 1, finish B



Waxed nylon lacing

Type	Width (W)	Length (L)	Thickness* Nominal	Breaking Load Min (Kg)	Colour	Article-No.
MW062BK	1.5	460	0.3	13.6	Black (BK) ■	174-00001
MW062NT	1.5	460	0.3	13.6	Natural (NT) ■	174-00002
MW090BK	2.3	460	0.3	22.7	Black (BK) ■	174-00003
MW090NT	2.3	460	0.3	22.7	Natural (NT) ■	174-21041

All dimensions in mm. Subject to technical changes
Measured under 0.45kg tension

LOH Lacing

Waxed Nylon Lacing (Natural)

- Low cost version of MW waxed nylon



LOH lacing

Type	Ø	Length (m)	Colour	Article-No.
LOH1NT	1.7	1000	Natural (NT) ■	174-00231
LOH2NT	2	1000	Natural (NT) ■	174-00235

All dimensions in mm. Subject to technical changes

HellermannTyton Clips

Cable Clips, Round and Flat (Black and White)

- Full range of saddles to fit all common cables sizes



Cable clips

Type	Cable Size	Pin Lx	Pin Ø	Style	Colour	Article-No.
HT350WT	3.5	15	1	Round	White (WT) □	911-01085
HT400WT	4	20	1.5	Round	White (WT) □	911-01086
HT500WT	5	20	1.5	Round	White (WT) □	911-01087
HT600BK	6	20	1.5	Round	Black (BK) ■	911-01088
HT600WT	6	20	1.5	Round	White (WT) □	911-01089
HT700BK	7	20	1.5	Round	Black (BK) ■	911-01090
HT700WT	7	20	1.5	Round	White (WT) □	911-01091
HT800BK	8	29	2	Round	Black (BK) ■	911-01092
HT800WT	8	29	2	Round	White (WT) □	911-01093
HT900BK	9	29	2	Round	Black (BK) ■	911-01094
HT900WT	9	29	2	Round	White (WT) □	911-01096
HT1000BK	10	29	2	Round	Black (BK) ■	911-01097
HT1000WT	10	29	2	Round	White (WT) □	911-01098
HT1100WT	11	29	2	Round	White (WT) □	911-01099
HT1200BK	12	29	2	Round	Black (BK) ■	911-01100
HT1200WT	12	29	2	Round	White (WT) □	911-01101
HT2000WT	20	29	2	Round	White (WT) □	911-01102
HT50WT	5	15	1.5	Flat	White (WT) □	911-01081
HT90WT	9	29	2	Flat	White (WT) □	911-01082
HT100WT	10	29	2	Flat	White (WT) □	911-01083
HT120WT	12	29	2	Flat	White (WT) □	911-01084

All dimensions in mm. Subject to technical changes

Electrical Insulation Tape

Hellertape: HT2 and HT3, PVC (Black and Colour)

- Operating temperature -10°C to + 80°C
- Cold and weather resistant
- Flame retardant
- Unaffected by moisture and most chemicals
- Good ageing characteristics
- No flapping or deterioration even under high temperatures

Technical Data

Description	HT2	HT3
Adhesion (N/cm)	1.8	1.6
Tensile strength (N/cm)	26	17
Elongation (%)	200	160
Breakdown Voltage (kV) mm ²	8	5.5



HT2

Type	Width (W)	Length (m)	Thickness	Colour	Article-No.
HT2BK	18	20	0.18	Black (BK) ■	911-01103
HT2BL	18	20	0.18	Blue (BL) ■	911-01104
HT2WT	18	20	0.18	White (WT) □	911-01107
HT2GR	18	20	0.18	Green (GR) ■	911-01105
HT2RD	18	20	0.18	Red (RD) ■	911-01106
HT2YL	18	20	0.18	Yellow (YL) ■	911-01108

All dimensions in mm. Subject to technical changes

HT3

Type	Width (W)	Length (m)	Thickness	Colour	Article-No.
HT3BK	19	10	0.13	Black (BK) ■	911-01109
HT3BL	19	10	0.13	Blue (BL) ■	911-01110
HT3WT	19	10	0.13	White (WT) □	911-01114
HT3GR	19	10	0.13	Green (GR) ■	911-01111
HT3RD	19	10	0.13	Red (RD) ■	911-01113
HT3YL	19	10	0.13	Yellow (YL) ■	911-01115

All dimensions in mm. Subject to technical changes

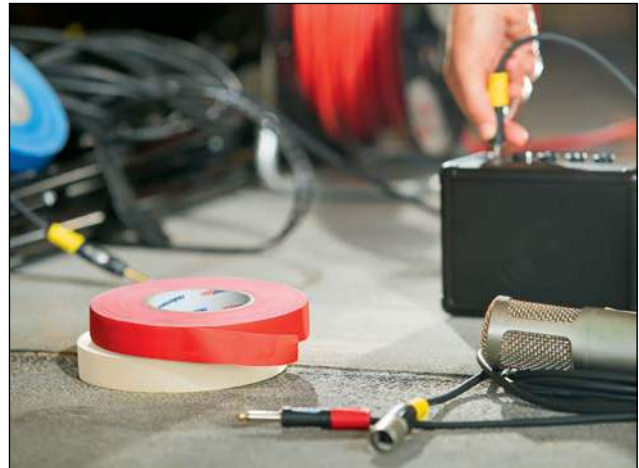
Recommended Industries for HT3:



Premium Vinyl Electrical Tape

HelaTape Flex 1000+, PVC (Black and Colour)

- Operating temperature -18°C to + 105°C
- Adhesion to backing (N/10mm) - 2.7
- Adhesion to steel (N/10mm) - 3.0
- Tensile strength (N/mm²) - 35
- Elongation - 300%
- Dielectric Strength (kV/mm) - 45
- All-weather, highly flexible, professional grade, self-adhesive vinyl electrical tape
- Pressure sensitive high quality rubber based adhesive
- Excellent resistance to abrasion, moisture, chemicals, corrosion and UV exposure
- Protective jacketing for low, medium and high voltage splices and repairs up to 1kV
- Flame retardant (UL 510)



Type	Width (W)	Length (m)	Thickness (T)	Colour	Article-No.
HHTAPEFLEX1000BK	19	20	0.18	Black (BK) ■	710-10601
HHTAPEFLEX1000BL	19	20	0.18	Blue (BL) ■	710-10603
HHTAPEFLEX1000RD	19	20	0.18	Red (RD) ■	710-10604
HHTAPEFLEX1000WT	19	20	0.18	White (WT) □	710-10607

All dimensions in mm. Subject to technical changes

Electrical Insulation Tape

Nitto (Black and Colour)

- Operating temperature -10°C to + 80°C
- Adhesion (N/cm) - 1.8
- Tensile strength (N/cm) - 26
- Elongation (%) - 200%
- Breakdown Voltage (kV) - 9
- Cold and weather resistant
- Good ageing characteristics
- Unaffected by moisture and most chemicals
- No flagging or deterioration even under high temperatures
- Insulation Class 9



Type	Width (W)	Length (m)	Thickness (T)	Colour
A21BK208	18	20	0.2	Black (BK) ■
A21BL208	18	20	0.2	Blue (BL) ■
A21WT208	18	20	0.2	White (WT) □
A21GR208	18	20	0.2	Green (GR) ■
A21RD208	18	20	0.2	Red (RD) ■
A21YL208	18	20	0.2	Yellow (YL) ■

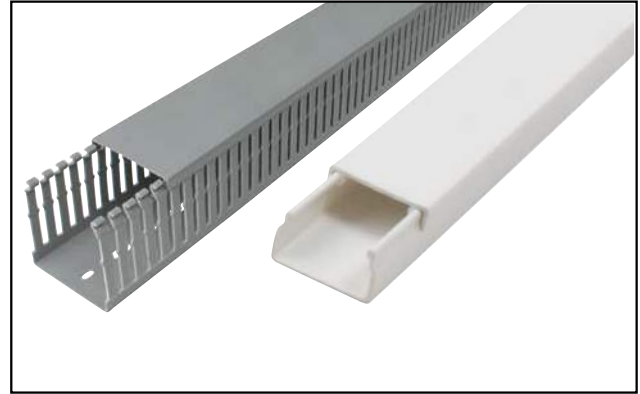
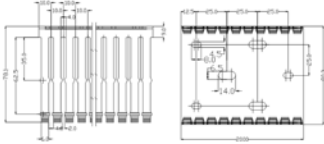
All dimensions in mm. Subject to technical changes

Cable Securing

Trunking: Slotted (Grey) and Solid (White)

- Tough, rigid material with excellent resistance to chemicals and aging properties
- Material lead and cadmium free
- Self-extinguishing
- SABS IEC 61084:1919

Trunking: Slotted (Grey)



Finger trunking and Solid trunking

Type	Slot Width	Width (W)	Height (H)	Material	Colour	Length (m)	Bundle
1530N	10	15	30	RAL700 PVC	Grey (GY) ■	2	50
2540N	10	25	40	RAL700 PVC	Grey (GY) ■	2	56
2560N	10	25	60	RAL700 PVC	Grey (GY) ■	2	40
2580N	10	25	80	RAL700 PVC	Grey (GY) ■	2	28
3030N	10	30	30	RAL700 PVC	Grey (GY) ■	2	60
4040N	10	40	40	RAL700 PVC	Grey (GY) ■	2	38
4060N	10	40	60	RAL700 PVC	Grey (GY) ■	2	28
4080N	10	40	80	RAL700 PVC	Grey (GY) ■	2	28
6040N	10	60	40	RAL700 PVC	Grey (GY) ■	2	26
6060N	10	60	60	RAL700 PVC	Grey (GY) ■	2	18
6080N	10	60	80	RAL700 PVC	Grey (GY) ■	2	20
8040N	10	80	40	RAL700 PVC	Grey (GY) ■	2	28
8060N	10	80	60	RAL700 PVC	Grey (GY) ■	2	20
8080N	10	80	80	RAL700 PVC	Grey (GY) ■	2	16
10060N	10	100	60	RAL700 PVC	Grey (GY) ■	2	16
10080N	10	100	80	RAL700 PVC	Grey (GY) ■	2	12
12080N	10	120	80	RAL700 PVC	Grey (GY) ■	2	12

All dimensions in mm. Subject to technical changes

Trunking: Solid (White)

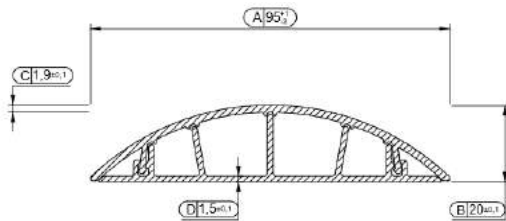
- Snap on lids included
- Available with adhesive backing

Type	Thickness (T)	Width (W)	Height (H)	Material	Colour	Length (m)	Bundle
1616S	1.0	16	16	PVC	White (WT) □	3	20
1616S29	1.0	16	16	PVC	White (WT) □	3	20
2516S	1.0	25	16	PVC	White (WT) □	3	20
2525S	1.0	25	25	PVC	White (WT) □	3	20
4016S	0.9	40	16	PVC	White (WT) □	3	10
4025S	1.0	40	25	PVC	White (WT) □	3	10
4040S	1.02	40	40	PVC	White (WT) □	3	10
7575S*	2.2	75	75	PVC	White (WT) □	3	4
7575SWT*	2.2	75	75	PVC	White (WT) □	3	4
10040S	2.0	100	40	PVC	White (WT) □	3	4
10050S*	2.5	100	50	PVC	White (WT) □	3	2
100100S*	2.5	100	100	PVC	White (WT) □	3	2

All dimensions in mm. Subject to technical changes. * Minimum Order Quantity (MOQ) maybe required

Trunking: Floor (White)

- Snap on lid included
- Available with adhesive backing
- RCC No. 0608092
- Tough, rigid material with excellent resistance to chemicals and aging properties
- Material lead and cadmium free
- Self-extinguishing
- SABS IEC 61084:1919

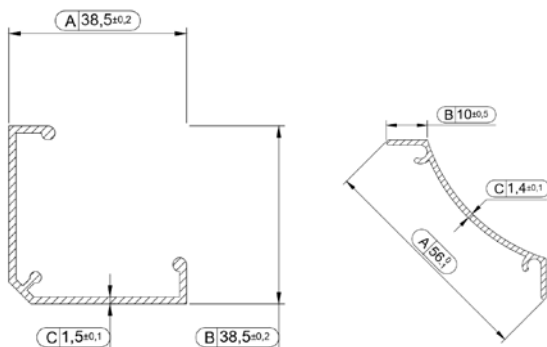


Solid floor trunking

Type	Thickness (T)	Width (W)	Material	Colour	Length (m)	Bundle
FT48GY	2	48	PVC	White (WT) <input type="checkbox"/>	2	10
FT70GY	2	70	PVC	White (WT) <input type="checkbox"/>	2	10

Trunking: Triangle Corner

- Snap on lid included
- Available with adhesive backing
- RCC No. 0608092
- Tough, rigid material with excellent resistance to chemicals and aging properties
- Material lead and cadmium free
- Self-extinguishing
- SABS IEC 61084:1919



Soild corner trunking

Type	Thickness (T)	Width (W)	Height (H)	Length (m)	Bundle
4040CNR	2	40	40	3	4

Cable Gland Selection: Wire Size and Number of Cores

PVC and PVSC SWA Cables (SABS 1507 600-1000V)

Wire Size mm ²	Recommended Gland Size For Cable Size/Number of Cores																	
	Number of Cores																	
	2	3	4	5	6	7	8	10	12	14	15	19	20	21	24	27	30	37
1.5	0	0	0	0/1	1	1	1	2	2	2	2	3	3	3	3	3	3	4
2.5	0	0	0/1	1	2	2	2	2	3	3	3	3	3	3	4	4	4	4
4	0/1	1	1	1/2	2	2	2	3	3	3	3	4	4	4	4	4	4/5	5
6	1	1	1/2	2	2	2	-	-	-	-	-	-	-	-	-	-	-	-
10	1/2	2	2															
16	2	2	3															
25	2/3	2/3	3															
35	2/3	3	3/4															
50	3	3/4	4															
70	3/4	4	4/5															
95	4	4/5	5															
120	4	5	5															
150	4/5	5	5/6															
185	5	5/6	6															
240	6	6	6/7															
300	6	6	7															
**	8	-	-															

All dimensions in mm. Subject to technical changes.

** Check the bedding diameter of the cable

Cable Gland Selection Guide

Gland Size	Entry	Standard SWA Cable Glands		A2 Compression Glands	
		Bedding Ø (min.)	Cable Ø (max.)	Cable Ø (min.)	Cable Ø (max.)
No 00	20			3	8
No 0	20	12.5	14.8	9	12
No 1	20	15.7	18.7	12	15
No 2	25	20.6	24.4	16	19
No 3	32	26.5	30	21	27
No 4	40	35	39.5	27	36
No 5	50	44	49	37	45
No 6	63	56	62.2	45	57
No 7	75	68	74	57	69

Subject to technical changes.

Rotary Cone Glands

BWR Range

- All types of SWA cable
- Clamping of armour wire for earth continuity and mechanical retention of cable
- Used indoor and outdoor
- Easy to install (rotary cone)
- Protects armour wire
- Nickel plated brass glands
- SANS 1213:2017 tested and approved
- Permits available on request

Accessories

- PVC or rubber shrouds (p172)
- Earth tags (p172)



Type	Size	Entry	Bedding Ø max.	Cable Ø max.	Article-No.
BWR0	No 0	20	12.5	14.8	911-01117
BWR1	No 1	20	15.7	18.7	911-01118
BWR2	No 2	25	20.6	24.4	911-01119
BWR3	No 3	32	26.5	30.0	911-01120
BWR4	No 4	40	35	39.5	911-01121
BWR5	No 5	50	44	49.0	911-01122
BWR6	No 6	63	56	62.2	911-01123
BWR7	No 7	75	68	74.0	911-01124

All dimensions in mm. Subject to technical changes.

Loose Cone Glands

BWL Range

- All types of SWA cable
- Clamping of armour wire for earth continuity and mechanical retention of cable
- Used indoor and outdoor
- Easy to install (rotary cone)
- Protects armour wire
- Nickel plated brass glands
- SANS 1213:2017 tested and approved
- Permits available on request

Accessories

- PVC or rubber shrouds (p172)
- Earth tags (p172)



Type	Size	Entry	Bedding Ø max.	Cable Ø max.	Article-No.
BWL0	No 0	20	12.5	14.08	911-01125
BWL1	No 1	20	15.7	18.7	911-01126
BWL2	No 2	25	20.6	24.4	911-01127
BWL3	No 3	32	26.5	30.0	911-01128
BWL4	No 4	40	35	39.5	911-01129
BWL5	No 5	50	44	49.0	911-01130
BWL6	No 6	63	56	62.2	911-01131
BWL7	No 7	75	68	74.0	911-01132

All dimensions in mm. Subject to technical changes.

Compression Glands

A2 Range

- Nickel-plated brass glands
- All types of 'unarmoured' cable
- Used indoor and outdoor
- Easy to install
- Displacement seal concept ensures effective seal to the outer sheath
- Novel seal design accommodates wide cable range
- SANS 1213:2017 tested and approved
- Permits available on request



Type	Size	Entry	Bedding Ø (max.)	Cable Ø (max.)	Article-No.
A200	No 00	20	3	8	911-01142
A20	No 0	20	9	12	911-01143
A21	No 1	20	12	15	911-01144
A22	No 2	25	15	19	911-01145
A23	No 3	32	21	27	911-01146
A24	No 4	40	27	36	911-01147
A25	No 5	50	37	45	911-01148
A26	No 6	63	45	57	911-01149
A27	No 7	75	57	69	911-01150

All dimensions in mm. Subject to technical changes.

Metric Glands

Metric, PVC, Nylon (Black and White)

- Multipurpose application
- Watertight
- Easy to assemble
- Good strain relief
- Wide clamp range
- Multiple interlock facets guarantee equal compression against cable
- Advanced thread design improves cap/cable compression
- Metric thread, 20 x 1.5mm



Type	Size	Clamping Range Ø	Thread Length	Material	Colour
BCS1WT*	No 1	10 to 12.5	13	ABS	White (WT) <input type="checkbox"/>
BS0BK	No 0	8.5 to 10.5	13	PVC	Black (BK) <input checked="" type="checkbox"/>
BS0WT	No 0	10 to 12.5	13	PVC	White (WT) <input type="checkbox"/>
BS1BK	No 1	8.5 to 10.5	13	PVC	Black (BK) <input checked="" type="checkbox"/>
BS1WT	No 1	10 to 12.5	13	PVC	White (WT) <input type="checkbox"/>

All dimensions in mm. Subject to technical changes.

*Nylon glass-filled

Shrouds

Shrouds PVC (Black)

- PVC commonly used for indoor applications
- Neoprene Rubber is UV stabilised for outdoor applications

Type	Size	Material	Article-No.
SHP0	No 0	PVC	911-01176
SHP1	No 1	PVC	911-01177
SHP2	No 2	PVC	911-01178
SHP3	No 3	PVC	911-01179
SHP4	No 4	PVC	911-01180
SHP5	No 5	PVC	911-01181
SHP6	No 6	PVC	911-01182
SHP7	No 7	PVC	911-01183



Shrouds Rubber

Type	Size	Material	Article-No.
SHRL0	No 0	Rubber	911-01190
SHRL1	No 1	Rubber	911-01191
SHRL2	No 2	Rubber	911-01192
SHRL3	No 3	Rubber	911-01193
SHRL4	No 4	Rubber	911-01194
SHRL5	No 5	Rubber	911-01195
SHRL6	No 6	Rubber	911-01196
SHRL7	No 7	Rubber	911-01197

Slip-on Earth Tag

Type	Slip-size	Ø A	Ø B	Article-No.
ET0	No 0	20	6.8	
ET1	No 1	20	6.8	911-01198
ET2	No 2	25	6.8	911-01199
ET3	No 3	32	6.8	911-01200
ET4	No 4	40	6.8	911-01201
ET5	No 5	50	10.5	911-01202
ET6	No 6	63	10.5	911-01203
ET7	No7	75	10.5	

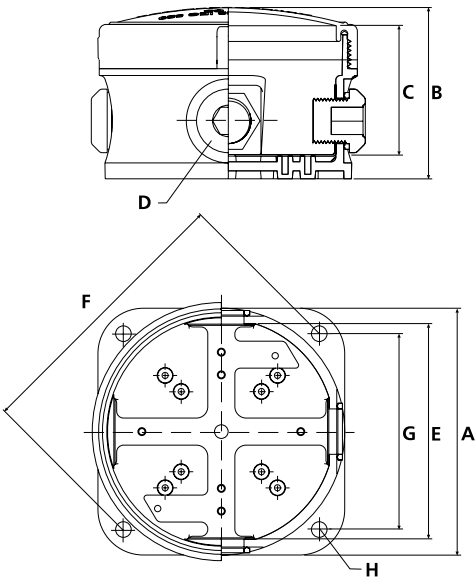
All dimensions in mm. Subject to technical changes.



Utility Junction Box

UV Resistant (White)

- Manufactured from high impact, corrosion and UV-resistant material
- General and industrial installations
- Allows for 1, 2, 3 and 4 way connections
- Blanking plugs, O-rings and lock nuts provided
- No need for drilling and tapping
- Internal earth plate provided (no exposed metal parts)
- Din rail mounting studs provided



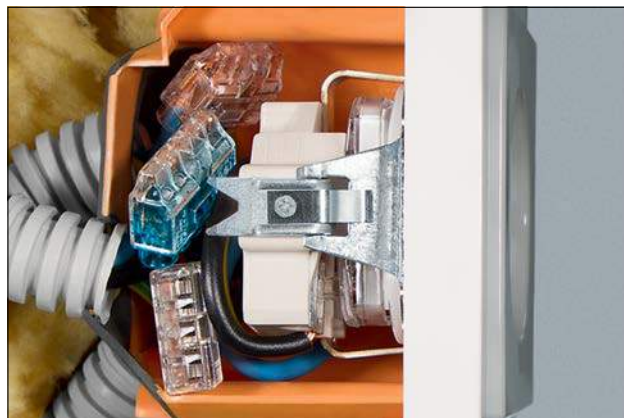
Locally Manufactured

Type	Total Width (A)	Outside Height (B)	Inside Height (C)	Gland Size (D)	Inside Width (E)	Fixing Hole			Article-No.
						(F)	(G)	(H)	
UJB1	109	75	57	M20	94	122	96	6.9	911-01162
UJB2	135	85.5	59.5	M25	124	150	106	7	911-01171

Solid and Stranded Wire Connectors

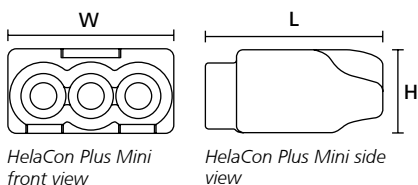
HelaCon Plus Mini (Colour)

- 40% smaller – Space saving design
- Low insertion force – Easy to use, saves time on installation
- Easy access to voltage test entry and innovative port shape design
- Correct installation can be visually checked through transparent housing
- Different colour codes for easy identification of size
- Allows different conductor diameters in each entry
- Safe application, installation and maintenance
- Practical Variobox with 350 pcs. of selected HCPM wire connectors available (148-90046)
- Max Current: 24 A
- Max Voltage: 600V
- Wire Range (VDE) in mm²: 0.5 to 2.5 mm² solid wires / 1.0 to 2.5 mm² stranded wires
- Stripping Length: 11.0mm
- Flammability: UL 94 V0
- Operating Temperatures -30°C to +85°C



HelaCon Plus Mini fits perfect in every space limited situation.

HF ✓ RoHS ✓



HelaCon Plus Mini front view

HelaCon Plus Mini side view

Type	Drawing	No of Conductors	Material	Colour	Width (W)	Height (H)	Length (L)	Qty.	Article-No.
HCPM-2		2	PC	Yellow (YL) ■	10.8	7.7	16.5	100 pcs.	148-90036
HCPM-3		3	PC	Orange (OG) ■	15.1	7.7	16.5	100 pcs.	148-90037
HCPM-4		4	PC	Transparent (CL) 	19.4	7.7	16.5	100 pcs.	148-90038
HCPM-5		5	PC	Blue (BU) ■	23.7	7.7	16.5	60 pcs.	148-90039
HCPM-6		6	PC	Violet (VT) ■	28.0	7.7	16.5	50 pcs.	148-90040
HCPM-8		8	PC	Black (BK) ■	36.6	7.7	16.5	50 pcs.	148-90041

All dimensions in mm. Subject to technical changes.
Minimum Order Quantity (MOQ) may differ from package content.

Suitable for the following industries:



Din Rail

- TS32- 46 277, sheet 1
- TS35 - EN 50 022
- TS35SS - EN 10088-2



Type	Drawing	Width (W)	Height (H)	Thickness (T)	Material	Length (m)	Article-No.
TS32		16.5	15	1.5	Steel, zinc plated	2	181-00706
TS35		35	7.5	1	Steel, zinc plated	2	181-00704
TS35S		35	15	1.5	Steel, zinc plated	2m Slotted	181-00701
TS35SSS		35	7.5	1	Stainless Steel	2m	181-00703
TS35AL		35	8	1.5	Aluminium	2m	181-00705
TS35ALS		35	8	1.5	Aluminium	2m Slotted	181-00700

All dimensions in mm. Subject to technical changes.
T* in 1.5mm

Connector strips

- Rated Voltage: 380V AC
- Temperature: 85°C



Type	Wire Size	Rated Current (A)	Material	Colour	Article-No.
CS3MBK	4	3	PE	Black (BK) ■	911-01796
CS5BK	6	5	PE	Black (BK) ■	911-01795
CS15BK	12	15	PE	Black (BK) ■	911-01797
CS15NT	12	15	PE	Natural (NT) ■	911-01798
CS30BK	16	30	PE	Black (BK) ■	911-01799
CS60BK	25	60	PE	Black (BK) ■	911-01800

All dimensions in mm. Subject to technical changes.

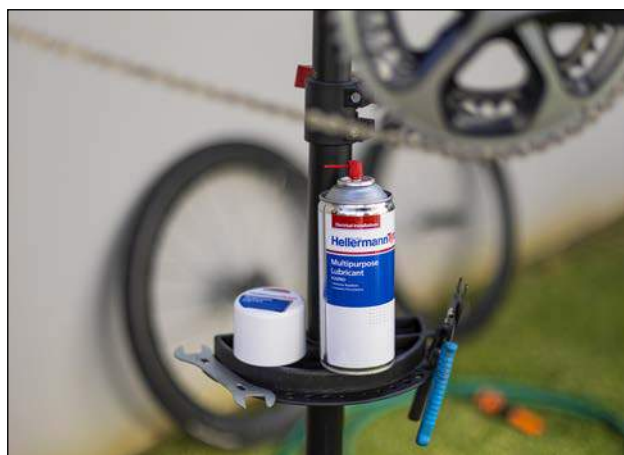
Multipurpose Lubricant

FOSPRO

- High penetrating properties
- Low surface tension and high capillary action allowing for easy dispersion of moisture
- Reduces contact resistance
- High dielectric strength improves insulation resistance
- Provides effective protection against corrosion
- Convenient method of anti-corrosion protection for equipment in storage or transit and requires no degreasing before usage
- Suitable for equipment operating in damp, humid and salt laden atmospheres and/or where frequent hosing down is necessary

Typical Uses

- Heavy duty industrial machinery and equipment (electrical and mechanical)
- General purpose: hinges, locks, bicycles, chains
- Effectively removes rust from surfaces
- Protects circuit boards from moisture
- Penetrating oil used to release rusted bolts or pins

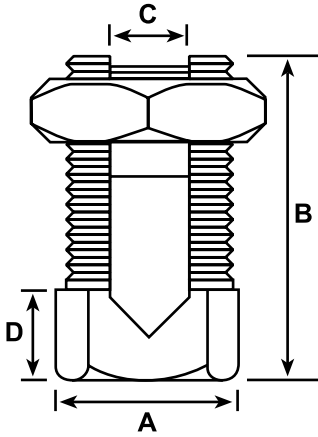


FOSPRO

Type	Description	Article-No.
FOSPRO	De-watering fluid	911-01803

Line Taps

- Made with high tensile brass and tin plated
- Threads are formed by a rolling process giving the nut extra clamping force
- Pressure pads are from extruded bar



Type	Conductor mm ²	Number of Conductors				Article-No.
		A	B	C	D	
HTLT10	10	12.6	27.4	5	9.5	911-00779
HTLT16	16	14.5	27.4	5.5	10	911-00782
HTLT25	25	14.5	29	7	10	911-00784
HTLT35	35	20.5	35	8	13	911-00785
HTLT50	50	22	42.5	9.3	17	911-00786
HTLT70	70	26.5	47.3	11	17	911-00787
HTLT95	95	29	53	14	17.5	911-00788
HTLT120	120	34.2	59.2	16.2	18	911-00780
HTLT150	150	34.2	59.2	16	17.5	911-00781
HTLT185	185	32	59.2	17.8	17.5	911-00783

All dimensions in mm. Subject to technical changes.

Wall Boxes

Hot Dipped Galvanised Wall Box



HT4X2WB and HT4X4WB

Type	Size	Gland Entry	Machine Screw Thread	Material	Qty	Article-No.
HT4X2WB	4x2	20	4	Galvanised	100	911-00767
HT4X4WB	4x4	20	4	Galvanised	100	911-00771

Wall Box Extensions (White Powder Coated)



HT4X2EBM and HT4X4EBM

Type	Size	Gland Entry	Machine Screw Thread	Material	Qty	Article-No.
HT4X2EBM	4x2	20	4	Powder Coated	100	911-00768
HT4X4EBM	4x4	20	4	Powder Coated	100	911-00772

Wall Box (Galvanised)

- Earth stud



HT3X3WB and HT3X6WB

Type	Size	Gland Entry	Material	Qty	Article-No.
HT3X3WB	3x3	20 & 25	Galvanised	100	911-00775
HT3X6WB	3x6	20 & 25	Galvanised	100	911-00777
HT3X3WBE	3x3	20 & 25	Galvanised	100	911-00776
HT3X6WBE	3x6	20 & 25	Galvanised	100	911-00778

All dimensions in mm. Subject to technical changes.

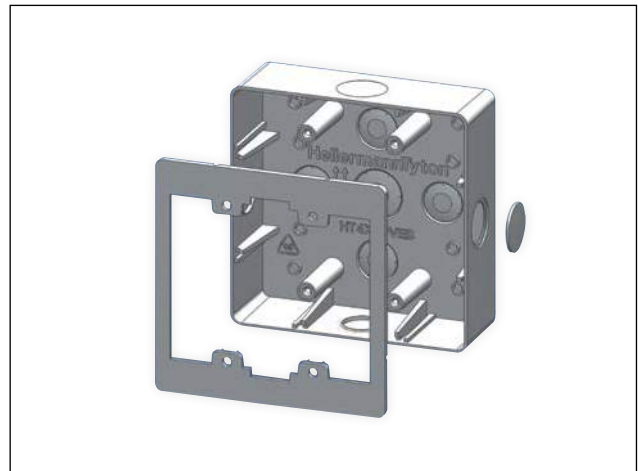
Wall Boxes

Polypropylene (White)

- Operating temperature; -20°C to +85°C
- Designed and manufactured in South Africa to comply with local conditions and specifications
- Unbreakable design
- Easy to remove knockouts
- Five easily removable rear knockouts 1 x 25.0mm and 4 x 20.0mm
- Drill guides for quick mounting
- Extension boxes unique side knock-out
- Flammability UL94 V2
- Certification IEC60335-1:2010 IEC60695-2-11 (Glow wire test 450°C)



Polypropylene wall box range



Innovative design



Locally Manufactured

Wall Boxes

Type	Size	Gland Entry	Material	Colour	Qty	Article-No.
HT4X2PVWB	4x2	20	Polypropylene	White (WT) <input type="checkbox"/>	100	911-00769
HT4X4PVWB	4x4	20	Polypropylene	White (WT) <input type="checkbox"/>	100	911-00773

All dimensions in mm. Subject to technical changes.

Wall Box Extensions

Type	Size	Gland Entry	Material	Colour	Qty	Article-No.
HT4X2PVEB	4x2	20 & 25	Polypropylene	White (WT) <input type="checkbox"/>	100	911-00770
HT4X4PVEB	4x4	20 & 25	Polypropylene	White (WT) <input type="checkbox"/>	100	911-00774

All dimensions in mm. Subject to technical changes.

Copper Bonded Earth Rods

HTCBER1200X12 AND HTCBER1200X13

- Low cost
- No exposed steel (no rust)
- Corrosion resistant
- High tensile strength
- Low carbon steel core
- Suitable for deep driving
- *HTCBER1200X13: SABS 1063:2020 approval (Authorization certificate available on request)



Type	Length (mm)	Φ	Micron
HTCBER1200X12	1200	12	250
HTCBER1200X13*	1200	13	250

Optional Accessories

Type	Image	Description
HTCBERCLAMP		Earth Clamp
HTCBERCOUPLING		Earth Coupler



- Strong molecular bond is achieved by applying 99.95% pure copper electrolytically between steel core and copper
- Molecularly bonded copper covers full length of rod including threads
- Thread strength is achieved thru cold rolling process

